

$14 + 7 =$
 $20 + 5 =$
 $25 + 25 =$
 $31 + 10 =$
 $42 + 42 =$
 $15 + 20 =$
 $8 + 4 =$
 $12 + 18 =$
 $100 + 30 =$
 $42 + 12 =$
 $8 + 8 =$
 $10 + 12 =$
 $32 + 8 =$

$21 - 7 =$
 $48 - 8 =$
 $51 - 3 =$
 $12 - 6 =$
 $24 - 5 =$
 $52 - 20 =$
 $31 - 15 =$
 $42 - 12 =$
 $36 - 8 =$
 $100 - 60 =$
 $40 - 32 =$
 $210 - 30 =$
 $24 - 12 =$

$3 \cdot 3 =$
 $4 \cdot 3 =$
 $5 \cdot 5 =$
 $6 \cdot 6 =$
 $7 \cdot 2 =$
 $3 \cdot 8 =$
 $2 \cdot 4 =$
 $3 \cdot 5 =$
 $8 \cdot 2 =$
 $10 \cdot 3 =$
 $0 \cdot 8 =$
 $4 \cdot 4 =$
 $7 \cdot 7 =$

$8 \cdot 8 =$
 $7 \cdot 7 =$
 $6 \cdot 4 =$
 $5 \cdot 8 =$
 $3 \cdot 2 =$
 $4 \cdot 8 =$
 $3 \cdot 5 =$
 $5 \cdot 7 =$
 $6 \cdot 3 =$
 $7 \cdot 3 =$
 $4 \cdot 7 =$
 $5 \cdot 2 =$
 $8 \cdot 2 =$

$18 =$
 $40 =$
 $25 =$
 $36 =$
 $12 =$
 $8 =$
 $9 =$
 $20 =$
 $24 =$
 $81 =$
 $28 =$
 $21 =$
 $49 =$

$10 : 2 =$
 $12 : 6 =$
 $8 : 4 =$
 $2 : 2 =$
 $18 : 6 =$
 $21 : 7 =$
 $24 : 3 =$
 $40 : 5 =$
 $25 : 5 =$
 $9 : 3 =$
 $2 : 1 =$
 $100 : 10 =$
 $20 : 5 =$
 $50 : 10 =$
 $30 : 5 =$

$321 + 343$

$213 - 101$

$435 - 342$

$432 + 268$

Større end mindre end

3	4
10	10
8	2
12	10
8	8
2	1
0	8
4	2
100	200
3	3

Tegn trekant

$601 - 228$

Tegn kvadrat.

Skriv gangestykke
4 = 2 - 2

8 + 8 =
16 + 4 =
12 + 12 =
32 + 9 =
27 + 5 =
13 + 12 =
35 + 35 =
47 + 8 =
22 + 120 =
52 + 54 =
102 + 12 =
88 + 15 =
130 + 45 =

18 - 12 =
102 - 50 =
88 - 18 =
9 - 9 =
24 - 9 =
14 - 7 =
100 - 49 =
83 - 14 =
32 - 16 =
8 - 5 =
10 - 0 =
48 - 25 =
26 - 22 =

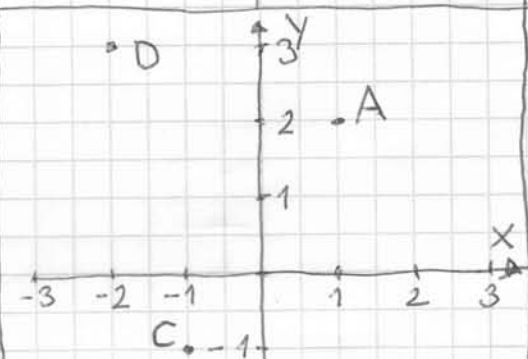
6 · 3 =
2 · 2 =
5 · 5 =
4 · 4 =
5 · 8 =
3 · 4 =
10 · 3 =
6 · 6 =
9 · 9 =
7 · 2 =
0 · 7 =
7 · 4 =
3 · 3 =

3 · 8 =
2 · 3 =
5 · 8 =
7 · 7 =
6 · 3 =
2 · 9 =
2 · 6 =
8 · 8 =
10 · 10 =
9 · 3 =
7 · 5 =
6 · 4 =
6 · 5 =

12 =
30 =
36 =
49 =
25 =
24 =
18 =
9 =
14 =
35 =
81 =
27 =

12 : 3 =
24 : 8 =
40 : 5 =
21 : 7 =
35 : 7 =
25 : 5 =
64 : 8 =
14 : 2 =
24 : 4 =

276 + 326
426 - 202

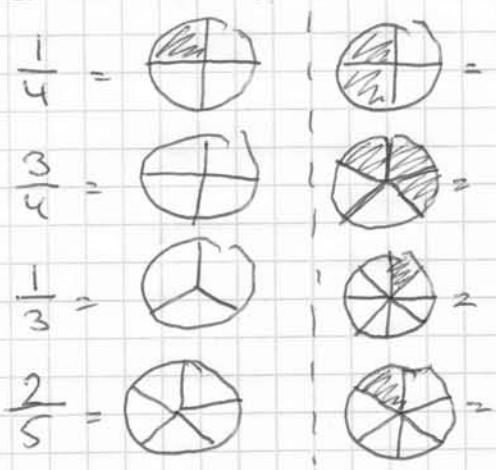


Afløs:
A(,) D(,)
B(,) E(2, 1) afsæt
C(,) F(-3, 2) afsæt.

Større end mindre end
0,50 > 0,18
4,2 > 3,8
10 > 5
0,5 > 0,18
0,04 < 1,2
100 > 100
4,8 > 4,22
3,4 > 3,28

18 : 3 =
45 : 9 =
28 : 4 =
9 : 3 =
18 : 9 =
49 : 7 =

529 - 254
10 · 100 =
20 · 10 =



1/4 + 1/4 =
2/5 + 1/5 =
1/8 + 1/8 =
3/10 + 4/10 =

$$12 + 12 =$$

$$21 + 8 =$$

$$100 + 12 =$$

$$42 + 18 =$$

$$52 + 13 =$$

$$91 + 11 =$$

$$103 + 15 =$$

$$88 - 18 =$$

$$32 - 15 =$$

$$102 - 8 =$$

$$45 - 16 =$$

$$25 - 8 =$$

$$12 - 8 =$$

$$2 \cdot 2 =$$

$$4 \cdot 5 =$$

$$6 \cdot 5 =$$

$$4 \cdot 4 =$$

$$5 \cdot 5 =$$

$$8 \cdot 3 =$$

$$6 \cdot 4 =$$

$$3 \cdot 3 =$$

$$2 \cdot 8 =$$

$$7 \cdot 2 =$$

$$3 \cdot 6 =$$

$$8 \cdot 3 =$$

$$3 \cdot 7 =$$

$$5 \cdot 3 =$$

$$5 \cdot 8 =$$

$$8 \cdot 8 =$$

$$7 \cdot 7 =$$

$$9 \cdot 9 =$$

$$3 \cdot 4 =$$

$$4 \cdot 7 =$$

$$3 \cdot 7 =$$

$$5 \cdot 5 =$$

$$5 \cdot 4 =$$

$$6 \cdot 2 =$$

$$7 \cdot 2 =$$

$$3 \cdot 6 =$$

Senio gajeduykle

12 =

24 =

15 =

40 =

36 =

81 =

18 =

4 =

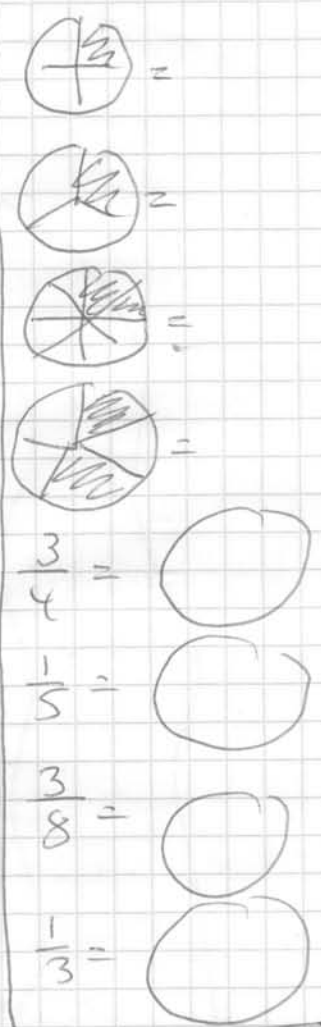
9 =

21 =

45 =

32 =

10 =



$$413 + 527 =$$

$$12 : 4 =$$

$$24 : 8 =$$

$$50 : 10 =$$

$$45 : 9 =$$

$$568 - 214 =$$

$$9 : 3 =$$

$$18 : 6 =$$

$$21 : 3 =$$

$$25 : 5 =$$

$$36 : 6 =$$

$$413 - 131 =$$

$$28 : 4 =$$

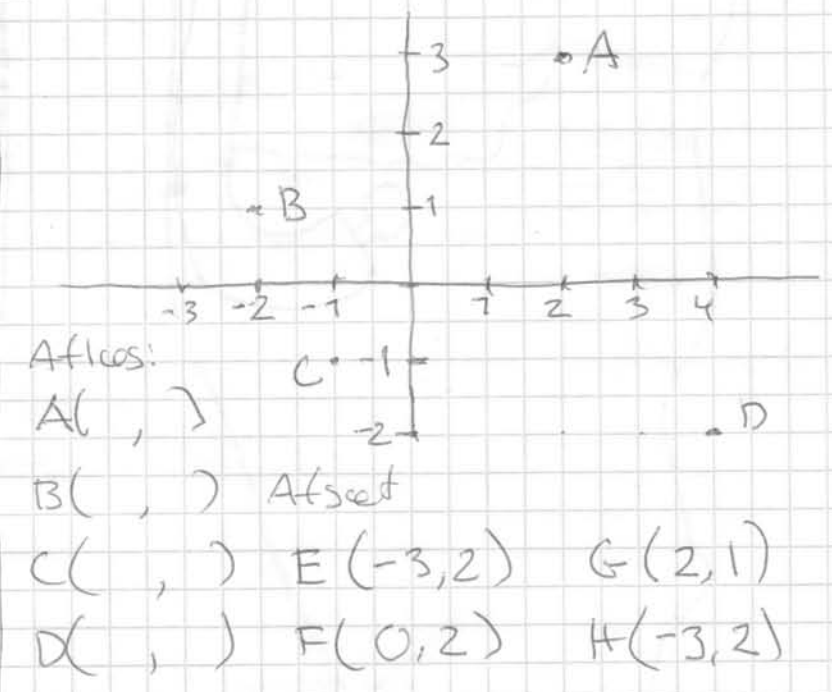
$$32 : 8 =$$

$$20 : 4 =$$

$$35 : 5 =$$

$$100 : 10 =$$

$$80 : 40 =$$

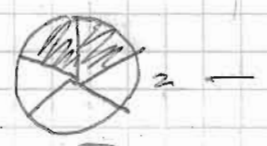
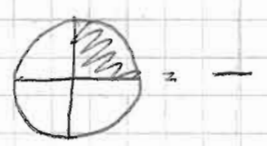


Tegu Parallelogram Tegu trapez,

Skriver gængslyk

$12 + 12 =$	$3 \cdot 3 =$	$7 \cdot 7 =$	$12 =$	$18 : 3 =$
$21 + 9 =$	$4 \cdot 3 =$	$0 \cdot 8 =$	$24 =$	$15 : 5 =$
$58 + 8 =$	$10 \cdot 2 =$	$1 \cdot 9 =$	$32 =$	$24 : 2 =$
$202 + 19 =$	$9 \cdot 9 =$	$8 \cdot 4 =$	$42 =$	$81 : 9 =$
$32 + 15 =$	$6 \cdot 6 =$	$5 \cdot 7 =$	$81 =$	$36 : 6 =$
$18 + 18 =$	$2 \cdot 3 =$	$8 \cdot 5 =$	$72 =$	$32 : 4 =$
$28 + 15 =$	$4 \cdot 4 =$	$3 \cdot 5 =$	$25 =$	$42 : 6 =$
$32 - 8 =$	$5 \cdot 5 =$	$2 \cdot 8 =$	$21 =$	$49 : 7 =$
$52 - 48 =$	$7 \cdot 2 =$	$6 \cdot 7 =$	$18 =$	$21 : 7 =$
$102 - 4 =$	$6 \cdot 4 =$	$6 \cdot 6 =$	$15 =$	$30 : 5 =$
$59 - 12 =$	$2 \cdot 9 =$	$9 \cdot 5 =$	$35 =$	$10 : 2 =$
$18 - 9 =$	$8 \cdot 3 =$	$7 \cdot 2 =$	$48 =$	$100 : 10 =$
$25 - 5 =$	$3 \cdot 6 =$	$10 \cdot 3 =$	$9 =$	$64 : 8 =$

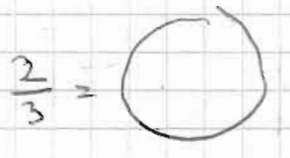
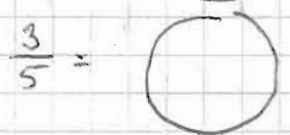
$432 + 628$



$538 - 214$



$408 - 152$



Større end mindre end.

12	18	102	1020
0,5	0,25	-3,2	4
0,6	0,60	-0,5	0,5
0,18	0,2	0,8	0,48
3,2	3,8	0,3	-0,32

3 m =	cm	2 km =	m.
4 m =	cm	2000 m =	m
1200 km =	m.	3 m =	cm.
20 mm =	cm	3,9 m =	cm.
200 cm =	m	45 mm =	cm

En mand køber 1 pakke rugbrød for 20 kr. Hvad koster 3 rugbrød?

$$43 + 8 =$$

$$52 + 24 =$$

$$103 + 13 =$$

$$18 + 18 =$$

$$38 + 12 =$$

$$12 + 33 =$$

$$38 + 42 =$$

$$18 - 12 =$$

$$48 - 32 =$$

$$25 - 12 =$$

$$58 - 26 =$$

$$82 - 48 =$$

$$312 - 18 =$$

$$3 \cdot 3 =$$

$$2 \cdot 4 =$$

$$4 \cdot 3 =$$

$$5 \cdot 5 =$$

$$8 \cdot 3 =$$

$$4 \cdot 5 =$$

$$5 \cdot 8 =$$

$$10 \cdot 2 =$$

$$7 \cdot 3 =$$

$$2 \cdot 2 =$$

$$7 \cdot 5 =$$

$$3 \cdot 5 =$$

$$4 \cdot 8 =$$

$$9 \cdot 9 =$$

$$0 \cdot 4 =$$

$$6 \cdot 6 =$$

$$4 \cdot 6 =$$

$$5 \cdot 4 =$$

$$8 \cdot 8 =$$

$$7 \cdot 7 =$$

$$6 \cdot 7 =$$

$$6 \cdot 5 =$$

$$4 \cdot 4 =$$

$$2 \cdot 2 =$$

$$1 \cdot 8 =$$

$$6 \cdot 2 =$$

$$8 \cdot 5 =$$

$$9 \cdot 5 =$$

$$24 =$$

$$21 =$$

$$12 =$$

$$8 =$$

$$10 =$$

$$30 =$$

$$36 =$$

$$81 =$$

$$32 =$$

$$15 =$$

$$18 =$$

$$35 =$$

$$16 =$$

$$49 =$$

$$36 : 6 =$$

$$30 : 5 =$$

$$24 : 3 =$$

$$10 : 2 =$$

$$25 : 5 =$$

$$49 : 9 =$$

$$42 : 6 =$$

$$21 : 7 =$$

$$35 : 5 =$$

$$28 : 7 =$$

$$45 : 9 =$$

$$40 : 8 =$$

$$32 : 4 =$$

$$90 : 9 =$$

$$1082 + 523$$



$$\frac{1}{4} + \frac{2}{4} = \frac{3}{4}$$

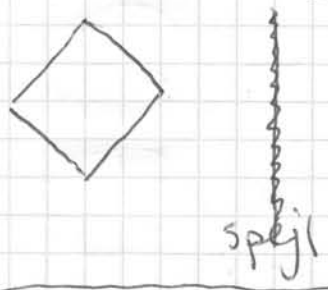
$$\frac{1}{5} + \frac{3}{5} = \frac{4}{5}$$

$$\frac{1}{8} + \frac{2}{8} = \frac{3}{8}$$

$$\frac{2}{10} + \frac{3}{10} = \frac{5}{10}$$

$$\frac{1}{3} + \frac{2}{3} = \frac{3}{3}$$





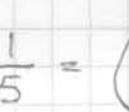
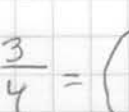
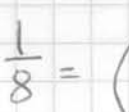




$$905 - 421$$



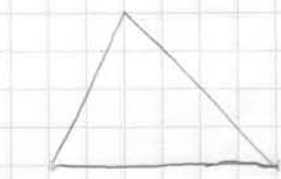
En mand spiser 2 pirater i timen. Hvor lang tid går for han har spist 20 pirater?

$$1049 - 152$$

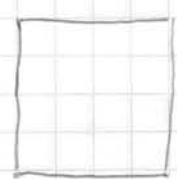
- | | | |
|----------------|--------------------|---------------------------|
| Tegn Kvadrat | Tegn Parallelogram | Tegn Retvinklet Trekant |
| Tegn Rektangel | Tegn Kapez | Tegn spidsvinklet Trekant |

$43+44=$	$5 \cdot 5=$	$2 \cdot 2=$	$30=$	$18:2=$	 = -
$31+19=$	$4 \cdot 3=$	$1 \cdot 8=$	$12=$	$9:3=$	 = -
$22+58=$	$6 \cdot 5=$	$2 \cdot 8=$	$8=$	$25:5=$	 = -
$13+18=$	$3 \cdot 3=$	$4 \cdot 5=$	$16=$	$20:2=$	 = -
$21+32=$	$4 \cdot 8=$	$3 \cdot 7=$	$24=$	$32:8=$	 = -
$103+52=$	$6 \cdot 6=$	$6 \cdot 4=$	$32=$	$36:6=$	 = -
$61+43=$	$8 \cdot 8=$	$5 \cdot 3=$	$49=$	$24:3=$	 = -
$40-32=$	$4 \cdot 4=$	$3 \cdot 8=$	$35=$	$49:7=$	 = -
$83-41=$	$9 \cdot 5=$	$9 \cdot 9=$	$40=$	$40:8=$	$\frac{1}{5} =$ 
$56-25=$	$10 \cdot 0=$	$4 \cdot 4=$	$21=$	$81:9=$	$\frac{3}{4} =$ 
$31-19=$	$7 \cdot 7=$	$7 \cdot 5=$	$28=$	$28:7=$	$\frac{1}{8} =$ 
$42-24=$	$9 \cdot 2=$	$6 \cdot 2=$	$27=$	$15:3=$	
$32-8=$	$2 \cdot 7=$	$8 \cdot 5=$	$64=$	$18:6=$	
$100-52=$	$7 \cdot 4=$	$3 \cdot 2=$	$36=$	$64:8=$	

$3218+1923$	$1m =$ cm
	$200cm =$ m
	$20mm =$ cm
	$3m =$ cm
$948-422$	$3km =$ m
	$15mm =$ cm
	$2,3km =$ m

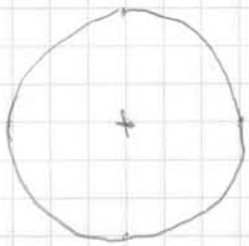


Areal =



Areal =

omkreds =



radius =

diameter =

$3041-143$	4	12
	3,2	3,3
	0,8	0,42
	0,6	0,62
	0,90	0,9
$3 \cdot 100 =$	102	10 ⁷
$30 \cdot 20 =$	$\frac{1}{2}$	0,5
$4 \cdot 200 =$	0,1	0,04

En mand går 2 km på en time.
Hvor mange timer tager det at gå 8 km?

En anden mand går 3 km på en time
Hvor mange km går han på 6 timer?

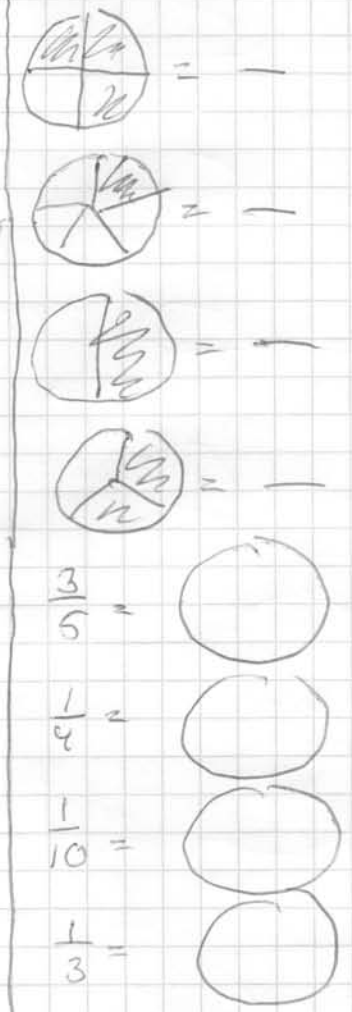
store og små appelsiner

3:3 =
2:2 =
5:5 =
4:8 =
2:7 =
0:6 =
3:2 =
8:5 =
7:7 =
6:6 =
3:4 =
8:3 =
3:7 =

6:4 =
3:5 =
6:3 =
2:4 =
7:5 =
4:4 =
9:3 =
8:6 =
7:6 =
5:2 =
6:5 =
7:8 =
6:9 =

12 =
10 =
24 =
32 =
36 =
81 =
64 =
21 =
40 =
18 =
54 =
45 =
42 =

12:6 =
8:2 =
25:5 =
36:9 =
32:4 =
42:7 =
45:9 =
14:2 =
18:6 =
21:7 =
30:6 =
81:9 =
64:8 =



328 + 74

4m = cm
200cm = m
20mm = cm
5,5m = cm



Area =

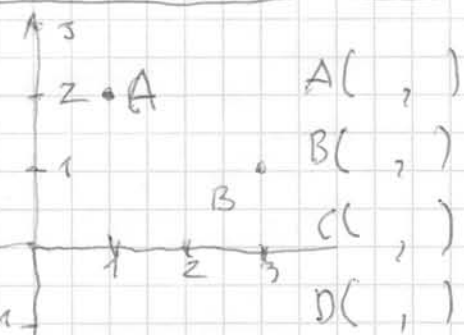


Area =

Omkreds =

2014 + 926

5 km = m
50 cm = m
460 cm = m
3000 m = km



929 - 214

store end.
30 20
4,5 4,2
0,5 0,8

Afset E(-1,2), F(2,1), G(-3,1)

1042 - 343

5,2 5,12 4:100 =
8,2 8,21 20:50 =
4,02 4,1 10:100 =
1000:100 =

For 35 kr får man 7 store appelsiner. Hvad koster 1?

$3 \cdot 3 =$

$6 \cdot 7 =$

$12 =$

$24 : 6 =$

$32 + 8 =$

$4 \cdot 5 =$

$3 \cdot 6 =$

$24 =$

$36 : 4 =$

$12 + 12 =$

$2 \cdot 2 =$

$6 \cdot 4 =$

$32 =$

$12 : 3 =$

$52 + 52 =$

$4 \cdot 8 =$

$5 \cdot 7 =$

$14 =$

$8 : 2 =$

$24 + 32 =$

$7 \cdot 3 =$

$9 \cdot 9 =$

$42 =$

$10 : 5 =$

$13 + 14 =$

$3 \cdot 4 =$

$8 \cdot 7 =$

$81 =$

$49 : 7 =$

$58 - 9 =$

$5 \cdot 5 =$

$9 \cdot 2 =$

$48 =$

$32 : 4 =$

$42 - 10 =$

$8 \cdot 8 =$

$8 \cdot 4 =$

$10 =$

$21 : 3 =$

$28 - 12 =$

$7 \cdot 4 =$

$3 \cdot 3 =$

$9 =$

$20 : 5 =$

$102 - 12 =$

$4 \cdot 4 =$

$8 \cdot 8 =$

$18 =$

$35 : 7 =$

$10 - 4 - 2 =$

$0 \cdot 10 =$

$1 \cdot 8 =$

$25 =$

$24 : 8 =$

$13 - 2 + 3 =$

$8 \cdot 5 =$

$4 \cdot 7 =$

$49 =$

$81 : 9 =$

$-2 + 4 + 2 =$

$8 \cdot 3 =$

$3 \cdot 7 =$

$64 =$

$72 : 8 =$

$12 - 6 + 3 =$

$912 + 423$



$4m =$

cm

$3500m =$

km

$4 \cdot 20 =$

$200cm =$

m

$300cm =$

m

$10 \cdot 100 =$

$3000m =$

km

$3,2km =$

m

$50 \cdot 50 =$

$40mm =$

cm

$35mm =$

cm

$20 \cdot 80 =$

$82,9 + 43,1$



En pige har 2 par sko, 3 par bukser og

2 trøjer. På hvor mange forskellige måder

kan hun gå klædt (talletre) ~~12~~

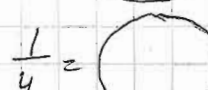


Sko: sorte, hvide

bukser: Blå, røde, grønne

trøjer: Gul, Lilla.

$635 - 251$



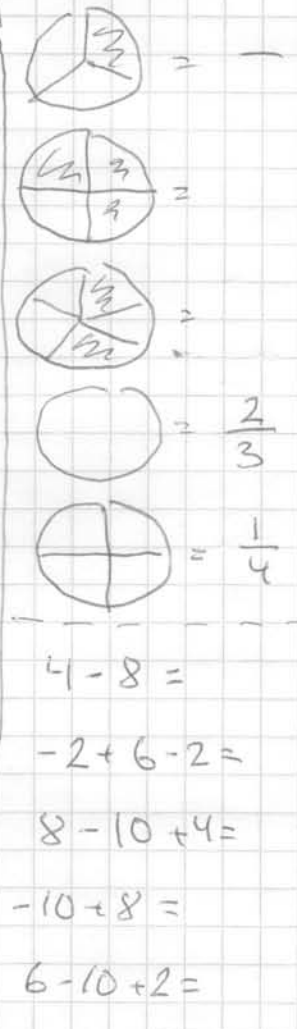
$1041 - 412$

$3 \cdot 3 =$
 $4 \cdot 5 =$
 $6 \cdot 6 =$
 $4 \cdot 8 =$
 $2 \cdot 2 =$
 $5 \cdot 5 =$
 $4 \cdot 6 =$
 $1 \cdot 2 =$
 $2 \cdot 3 =$
 $5 \cdot 4 =$
 $6 \cdot 8 =$
 $8 \cdot 8 =$
 $9 \cdot 9 =$
 $5 \cdot 7 =$

$7 \cdot 6 =$
 $7 \cdot 7 =$
 $6 \cdot 4 =$
 $8 \cdot 3 =$
 $4 \cdot 3 =$
 $8 \cdot 3 =$
 $5 \cdot 8 =$
 $6 \cdot 8 =$
 $7 \cdot 9 =$
 $10 \cdot 10 =$
 $7 \cdot 3 =$
 $7 \cdot 8 =$
 $6 \cdot 8 =$
 $6 \cdot 5 =$

$24 =$
 $21 =$
 $12 =$
 $18 =$
 $25 =$
 $40 =$
 $35 =$
 $32 =$
 $81 =$
 $72 =$
 $49 =$
 $36 =$
 $9 =$
 $8 =$

$10 : 2 =$
 $12 : 6 =$
 $24 : 3 =$
 $18 : 6 =$
 $49 : 7 =$
 $81 : 9 =$
 $32 : 8 =$
 $15 : 5 =$
 $40 : 8 =$
 $21 : 7 =$
 $42 : 6 =$
 $72 : 8 =$
 $36 : 6 =$
 $30 : 5 =$



$1024 + 256$

$2m = \text{cm}$
 $3000m = \text{km}$
 $200cm = \text{m}$
 $40mm = \text{cm}$
 $\frac{1}{2} = 50\%$ $\frac{1}{4} = 25\%$ $\frac{1}{5} = 20\%$ $\frac{1}{10} = 10\%$ $\frac{1}{3} = 33,3\%$
 1 ud af 4 = $\frac{1}{4} = 25\%$ 1 ud af 5 = $\frac{1}{5} = 20\%$
 1 ud af 10 = $\frac{1}{10} = 10\%$ 2 ud af 5 = $\frac{2}{5} = 40\%$
 1 ud af 3 = $\frac{1}{3} = 33,3\%$ 3 ud af 10 = $\frac{3}{10} = 30\%$

$2314 + 1726$

$3km = \text{m}$
 $2,5km = \text{m}$
 $2,6m = \text{cm}$
 3 ud af 4 = $\frac{3}{4} = 75\%$ 1 ud af 2 = $\frac{1}{2} = 50\%$
 1 ud af 6 = $\frac{1}{6} = 16,7\%$ 1 ud af 8 = $\frac{1}{8} = 12,5\%$

$1024 - 256$

$10 \cdot 100 =$
 $30 \cdot 30 =$
 $40 \cdot 40 =$
 En pige har 3 par sko, 2 bukser og 3 hæjer.
 På hvor mange forskellige måder kan hun gå klædt? (tælle træ)

$3001 - 2413$

sko: sort, hvid, grå
 bukser: blå, rød
 hæjer: grøn, gul, brun

$2 \cdot 102 =$
 $3 \cdot 103 =$
 $2 \cdot 210 =$
 $4 \cdot 110 =$

6:6 =	4:4 =	24 =	30:5 =	1 ud af 5 =	= %
4:3 =	2:2 =	12 =	21:3 =	3 ud af 5 =	= %
2:4 =	7:4 =	36 =	49:7 =	1 ud af 10 =	= %
8:4 =	9:3 =	48 =	35:5 =	1 ud af 3 =	= %
6:3 =	7:5 =	40 =	42:7 =	3 ud af 4 =	= %
4:6 =	6:9 =	42 =	63:9 =	1 ud af 4 =	= %
12:2 =	9:9 =	28 =	16:4 =	1 ud af 2 =	= %
3:8 =	5:6 =	35 =	18:3 =	8 - 16 =	
8:8 =	8:6 =	20 =	24:3 =	4 - 8 + 2 =	
7:7 =	6:7 =	40 =	25:5 =	8 + 8 - 32 =	
5:5 =	5:3 =	81 =	72:8 =	-4 + 16 =	
5:7 =	4:7 =	63 =	12:3 =	3 + 4:3 =	
7:9 =	8:9 =	64 =	36:6 =	8 + 2:2 =	

324 + 136	3m =	cm
	400cm =	m
	3,8m =	cm
	4km =	m
314 + 3186	50mm =	cm
	200cm =	m
	350cm =	m
3:100 =		
643 - 321	2:200 =	
	10:100 =	
	20:40 =	
	80:20 =	
3003 - 1121	10:0,5 =	
	2:13 =	
	4:14 =	

$x + 2 = 10$	$4x = 16$	$\frac{1}{4} + \frac{1}{4} =$
$x =$	$x =$	$\frac{1}{5} + \frac{2}{5} =$
$x + 8 = 12$	$2x + 2 = 10$	$\frac{3}{10} + \frac{2}{10} =$
$x =$	$x =$	$\frac{1}{3} + \frac{1}{3} =$
$3x = 18$	$8x = 64$	$\frac{1}{8} + \frac{3}{8} =$
$x =$	$x =$	$\frac{3}{14} + \frac{1}{14} =$

A(,) B(3, -1)

B(,) C(,) E(3, -1)

C(,) D(,) F(-2, 3)

D(,)

En mand skal lave en kode på 3 cifre (tal)
 Han kan godt lide 2, 4, 6. Hvor mange forskellige
 koder kan han lave?

$3 \cdot 3 =$

$7 \cdot 7 =$

$42 =$

$40 : 8 =$

$3 \text{ ud at } 5 = \overline{5} = \%$

$2 \cdot 2 =$

$9 \cdot 2 =$

$20 =$

$24 : 3 =$

$1 \text{ ud at } 10 = = \%$

$8 \cdot 8 =$

$4 \cdot 5 =$

$14 =$

$18 : 6 =$

$1 \text{ ud at } 4 = = \%$

$4 \cdot 3 =$

$7 \cdot 5 =$

$25 =$

$10 : 2 =$

$2 \text{ ud at } 3 = = \%$

$3 \cdot 6 =$

$6 \cdot 7 =$

$12 =$

$35 : 7 =$

$1 \text{ ud at } 5 = = \%$

$4 \cdot 4 =$

$5 \cdot 5 =$

$24 =$

$42 : 6 =$

$3215 + 1816$

$9 \cdot 9 =$

$3 \cdot 4 =$

$32 =$

$81 : 9 =$

$5 \cdot 4 =$

$6 \cdot 3 =$

$48 =$

$36 : 6 =$

$5 \cdot 8 =$

$3 \cdot 7 =$

$81 =$

$36 : 4 =$

$3 \cdot 2 =$

$9 \cdot 3 =$

$63 =$

$20 : 5 =$

$6021 - 1233$

$6 \cdot 8 =$

$7 \cdot 8 =$

$72 =$

$22 : 2 =$

$4 \cdot 6 =$

$6 \cdot 5 =$

$45 =$

$14 : 7 =$

$2 \cdot 7 =$

$0 \cdot 8 =$

$28 =$

$21 : 3 =$

$4 \cdot 231$

$2 \text{ m} = \text{ cm}$

$A(4, -1)$

$\frac{E}{2}$

$300 \text{ cm} = \text{ m}$

$B(1, 2)$

1

 $\cdot D$

$250 \text{ cm} = \text{ m}$

$C(-2, -1)$

$-2 -1$

1

2

3

4

5

 x

$4 \text{ km} = \text{ m}$

$D(,)$

-1

$6 \cdot 121$

$20 \text{ mm} = \text{ cm}$

$E(,)$

$3,5 \text{ km} = \text{ m}$

$60 \text{ mm} = \text{ cm}$

$2x = 8$

sterie end

$x = \underline{\quad}$

$12 \quad 18$

$x + 3 = 8$

$6 \cdot 200 =$

$3,2 \quad 3,18$

$x = \underline{\quad}$

$40 \cdot 30 =$

$0,8 \quad 0,4$

$x - 2 = 12$

$400 \cdot 10 =$

$3,2 \quad 3,2$

$x = \underline{\quad}$

$8 \cdot 20 =$

$10,8 \quad 10,81$

$x - 3 = 0$

$0,5 \cdot 100 =$

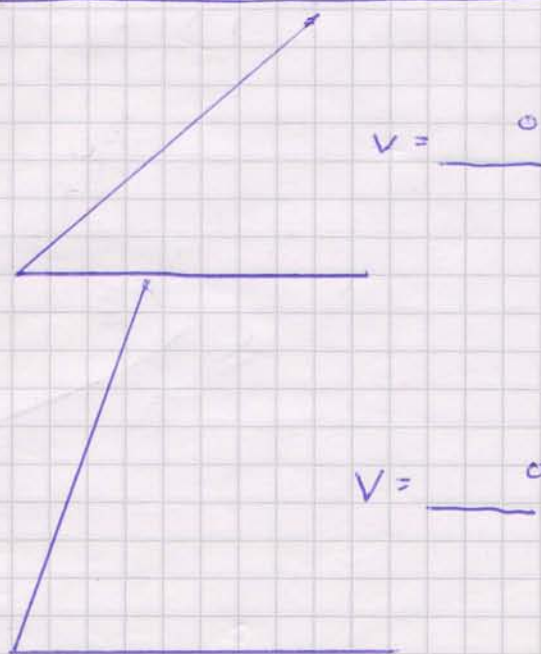
$4,20 \quad 4,2$

$x = \underline{\quad}$

$0,8 \cdot 10 =$

$0,9 \quad 1,0$

$-3 \quad -7$



6:6 =
 4:6 =
 4:3 =
 3:3 =
 7:7 =
 3:7 =
 2:2 =
 5:4 =
 6:7 =
 8:8 =
 4:4 =
 9:9 =
 2:8 =
 9:3 =

8:5 =
 2:9 =
 8:3 =
 5:5 =
 8:9 =
 3:2 =
 5:9 =
 7:4 =
 3:0 =
 10:5 =
 6:7 =
 6:9 =
 8:5 =
 5:7 =

36 =
 21 =
 25 =
 48 =
 32 =
 42 =
 56 =
 24 =
 18 =
 45 =
 28 =
 49 =
 64 =
 54 =

40:8 =
 25:5 =
 49:7 =
 50:10 =
 12:3 =
 9:3 =
 6:2 =
 45:9 =
 64:8 =
 63:9 =
 56:8 =
 49:7 =
 28:4 =
 48:7 =

1 ud at 5 =
 1 ud at 3 =
 3 ud at 5 =
 1 ud at 10 =
 3 ud at 4 =
 1 ud at 4 =

4531 + 1474

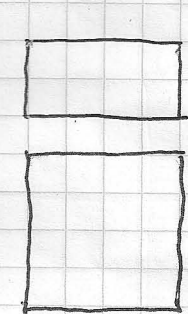
3042 - 1123

3 · 324

Storre end.

3,2 3,18
 0,14 0,18
 8,2 8,1
 4,2 4,20
 10,08 10,1
 -8 -2
 4 -3

$3x = 9$
 $x =$
 $4 + x = 10$
 $x =$
 $x - x = 16$
 $x =$
 $2x + 2 = 10$

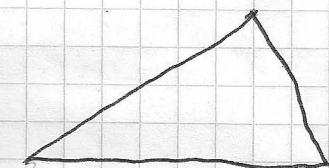


Area =
 Omkreds =
 Area =
 Omkreds =

5 · 225

-8 -2
 4 -3

$x =$
 $2x + 2 = 10$

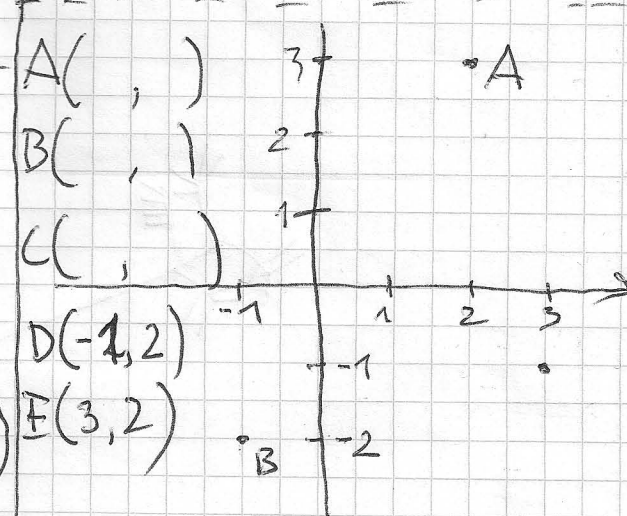


Area =

2 km = m
 200 cm = m
 30 cm = mm
 2,3 km² = m
 8 km = m
 350 cm = m
 30 mm = cm
 4 m = cm

$x =$

 $\frac{3}{4} =$
 $\frac{2}{5} =$



6 · 200 =
 4 · 20 =
 30 · 30 =
 40 · 20 =
 100 · 5 =
 6 · 30 =

$$6 \cdot 6 =$$

$$4 \cdot 2 =$$

$$2 \cdot 2 =$$

$$8 \cdot 3 =$$

$$5 \cdot 5 =$$

$$7 \cdot 6 =$$

$$4 \cdot 4 =$$

$$8 \cdot 5 =$$

$$5 \cdot 7 =$$

$$9 \cdot 9 =$$

$$7 \cdot 7 =$$

$$2 \cdot 0 =$$

$$3 \cdot 3 =$$

$$7 \cdot 3 =$$

$$4 \cdot 8 =$$

$$6 \cdot 4 =$$

$$9 \cdot 6 =$$

$$7 \cdot 8 =$$

$$3 \cdot 4 =$$

$$5 \cdot 9 =$$

$$6 \cdot 2 =$$

$$1 \cdot 8 =$$

$$8 \cdot 8 =$$

$$9 \cdot 4 =$$

$$9 \cdot 7 =$$

$$8 \cdot 9 =$$

$$12 =$$

$$21 =$$

$$24 =$$

$$32 =$$

$$42 =$$

$$48 =$$

$$18 =$$

$$45 =$$

$$45 =$$

$$28 =$$

$$54 =$$

$$64 =$$

$$49 =$$

$$42 : 7 =$$

$$54 : 9 =$$

$$24 : 8 =$$

$$21 : 7 =$$

$$42 : 6 =$$

$$50 : 10 =$$

$$32 : 4 =$$

$$45 : 5 =$$

$$63 : 7 =$$

$$9 : 3 =$$

$$10 : 2 =$$

$$48 : 8 =$$

$$20 \cdot 40$$

$$8 \cdot 10 =$$

$$100 \cdot 10 =$$

$$20 \cdot 20 =$$

$$30 \cdot 30 =$$

$$40 \cdot 80 =$$

$$32 \cdot 14 =$$

$$48 + 12 =$$

$$102 + 18 =$$

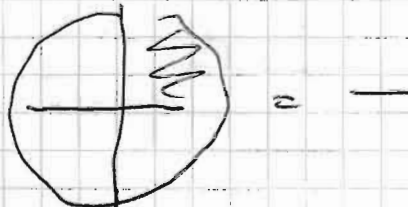
$$62 + 42 =$$

$$182 + 8 =$$

$$302 + 12 =$$

$$103 + 217$$

$$6 = 203$$



$$8 = 413$$



$$3004 - 1445$$

$$4x = 16$$

$$x = \underline{\underline{\quad}}$$

$$6 = 234$$

$$x + 3 = 12$$

$$x = \underline{\underline{\quad}}$$

$$423 - 94,3$$

$$3x + 1 = 10$$

$$x = \underline{\underline{\quad}}$$

$5 \cdot 5 =$

$2 \cdot 7 =$

$40 =$

$36 : 6 =$

$3408 + 1713 =$

$4 \cdot 2 =$

$9 \cdot 4 =$

$42 =$

$24 : 3 =$

$3 \cdot 4 =$

$3 \cdot 0 =$

$56 =$

$15 : 5 =$

$6 \cdot 6 =$

$9 \cdot 8 =$

$48 =$

$40 : 8 =$

$6 \cdot 3 =$

$7 \cdot 5 =$

$21 =$

$56 : 8 =$

$6734 - 3511 =$

$3 \cdot 7 =$

$8 \cdot 3 =$

$25 =$

$81 : 9 =$

$8 \cdot 8 =$

$7 \cdot 2 =$

$24 =$

$25 : 5 =$

$9 \cdot 5 =$

$4 \cdot 8 =$

$12 =$

$21 : 3 =$

$2 \cdot 2 =$

$8 \cdot 5 =$

$35 =$

$12 : 4 =$

$5043 - 1251 =$

$9 \cdot 3 =$

$7 \cdot 4 =$

$63 =$

$28 : 7 =$

$6 \cdot 8 =$

$2 \cdot 9 =$

$72 =$

$42 : 6 =$

$9 \cdot 7 =$

$7 \cdot 7 =$

$32 =$

$18 : 9 =$

$2 \cdot 3 =$

$6 \cdot 2 =$

$81 =$

$72 : 8 =$

$4 \cdot 218 =$

$13 : 2 = \text{rest} =$

$3x = 9$

$4x + 5 = 21$

$27 : 5 = \text{rest} =$

$x =$

$x =$

$11 : 3 = \text{rest} =$

$x + 4 = 12$

$8x + 4 = 36$

$17 : 4 = \text{rest} =$

$x =$

$x =$

$9 : 3 = \text{rest} =$

$2 \text{ m} = \text{cm}$

$\frac{1}{4} + \frac{2}{4} =$

$6 \cdot 124 =$

$24 : 7 = \text{rest} =$

$300 \text{ cm} = \text{m}$

$\frac{1}{5} + \frac{3}{5} =$

$84 : 9 = \text{rest} =$

$4,5 \text{ m} = \text{cm}$

$\frac{2}{10} + \frac{4}{10} =$

$8 : 5 = \text{rest} =$

$1 \text{ km} = \text{m}$

$\frac{1}{3} + \frac{1}{3} =$

$504 : 3 =$

$20 \text{ mm} = \text{cm} \quad \frac{1}{8} + \frac{1}{8} =$

$30 \cdot 200 =$



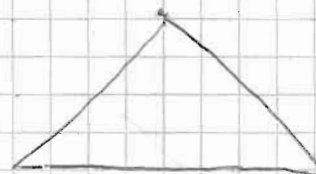
Area =

$4 \cdot 800 =$

Umkreis =

$40 \cdot 40 =$

$10 \cdot 0,5 =$



Area =

$100 \cdot 0,06 =$

$4 \cdot 1000 =$

$$4 \cdot 4 =$$

$$3 \cdot 5 =$$

$$6 \cdot 4 =$$

$$9 \cdot 3 =$$

$$5 \cdot 5 =$$

$$3 \cdot 3 =$$

$$2 \cdot 2 =$$

$$6 \cdot 6 =$$

$$5 \cdot 8 =$$

$$8 \cdot 3 =$$

$$3 \cdot 7 =$$

$$2 \cdot 8 =$$

$$3 \cdot 4 =$$

$$7 \cdot 3 =$$

$$8 \cdot 8 =$$

$$9 \cdot 2 =$$

$$4 \cdot 4 =$$

$$7 \cdot 7 =$$

$$8 \cdot 8 =$$

$$9 \cdot 4 =$$

$$8 \cdot 2 =$$

$$10 \cdot 0 =$$

$$6 \cdot 8 =$$

$$4 \cdot 5 =$$

$$9 \cdot 5 =$$

$$5 \cdot 7 =$$

$$42 =$$

$$56 =$$

$$81 =$$

$$24 =$$

$$36 =$$

$$45 =$$

$$30 =$$

$$48 =$$

$$21 =$$

$$35 =$$

$$12 =$$

$$18 =$$

$$9 =$$

$$48 : 8 =$$

$$21 : 7 =$$

$$40 : 8 =$$

$$18 : 3 =$$

$$81 : 9 =$$

$$42 : 6 =$$

$$24 : 3 =$$

$$35 : 7 =$$

$$36 : 6 =$$

$$100 : 10 =$$

$$56 : 8 =$$

$$72 : 9 =$$

$$27 : 3 =$$

$$18 : 5 = \text{rest} =$$

$$21 : 4 = \text{rest} =$$

$$23 : 6 = \text{rest} =$$

$$14 : 6 = \text{rest} =$$

$$43 : 8 = \text{rest} =$$

$$35 : 4 = \text{rest} =$$

$$26 : 3 = \text{rest} =$$

$$644 : 4$$

$$4219 + 2801$$

$$3 \cdot 218$$

$$\frac{1}{4} = \% \quad \frac{1}{2} = \% \quad \frac{1}{10} = \% \quad \frac{1}{3} = \%$$

$$\frac{1}{5} = \% \quad \frac{3}{4} = \% \quad \frac{3}{5} = \% \quad \frac{4}{10} = \%$$

10% af 100 kr = 10 kr
 20% af 100 kr = ~~2~~ kr
 30% af 200 kr = _____ kr



$$6443 - 1241$$

$$4 \cdot 324$$

10% af 200 kr = _____ kr
 50% af 1000 kr = _____ kr
 10% af 150 kr = _____ kr

$$9051 - 2653$$

$$4 + 3 \cdot 2 =$$

$$10 - 2 \cdot 2 =$$

$$3 \cdot 3 - 2 \cdot 2 =$$

$$-2 + 4 \cdot 4 =$$

En is koster 12 kr. I butikken er der tilbud på 3 is for 30 kr. Hvor mange pluge sparer man på tilbuddet?

$$20 \cdot 40 =$$

$$100 \cdot 200 =$$

$$80 \cdot 90 =$$

$$10 \cdot 0,7 =$$

$$48 + 54 =$$

$$68 + 42 =$$

$$25 + 35 =$$

$$108 + 208 =$$